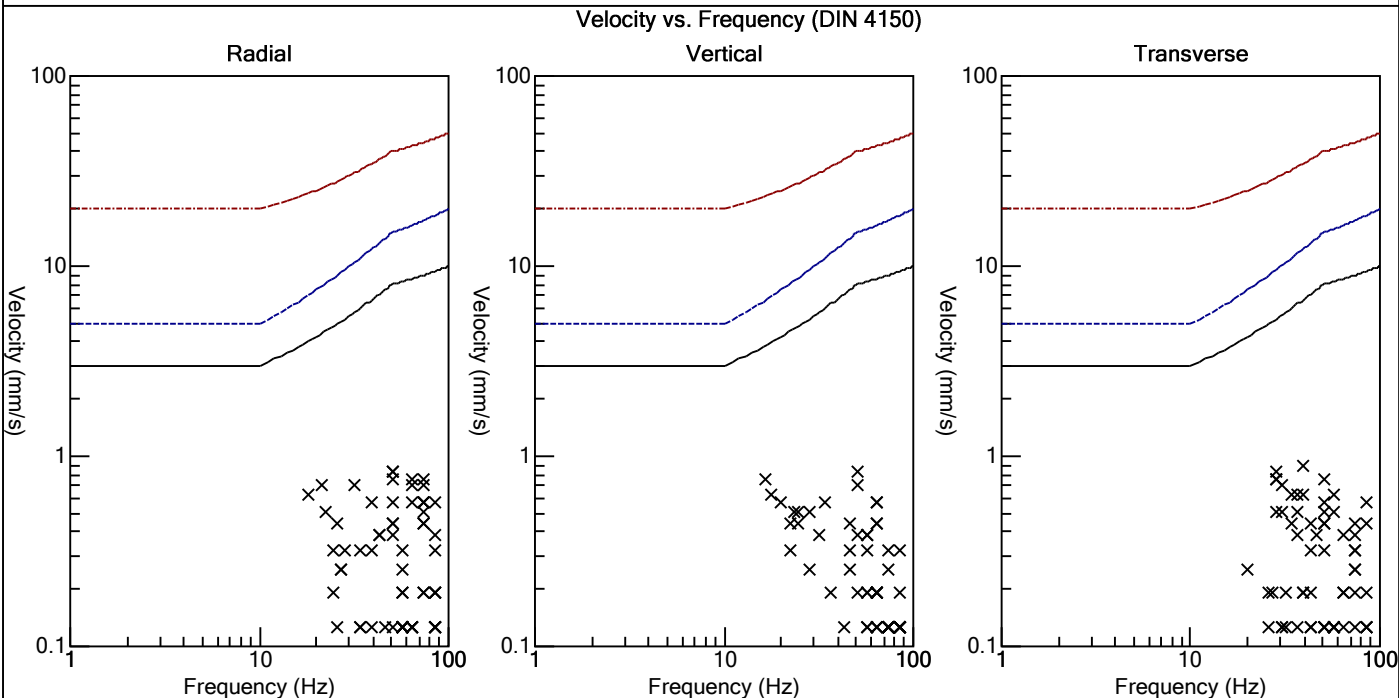
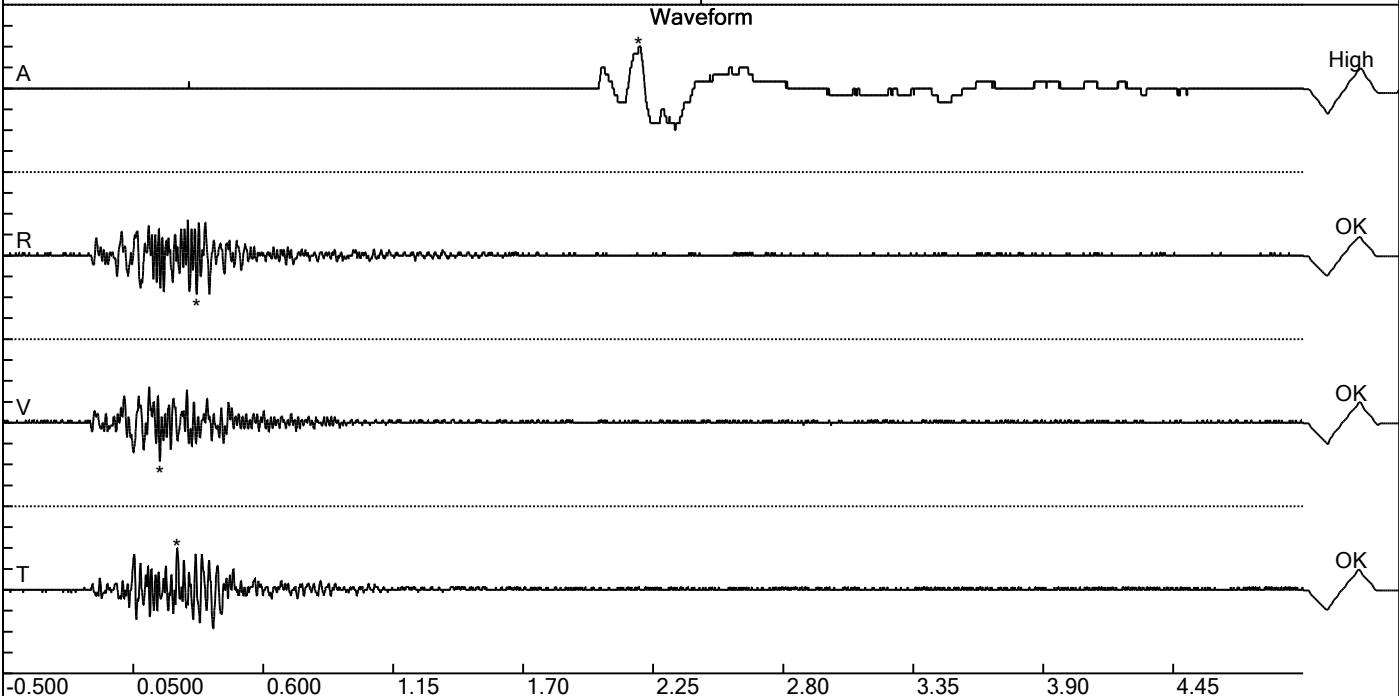


Carrière de BRS
 Comblain/Fraiture -4
 Tir du 09/04/2018
 Sismographe placé au
 261 Halleux
 4710 Comblain-au-Pont

Record: 2164201804091553100.dtb
 Number: 100
 Seismograph: Mini-Seis
 Type of Record: Waveform
 Date: 9/04/2018 15:53:00
 SN: 2164
 Duration: 5.50 Seconds
 Sample Rate: 1024
 Pre-Trigger: 0.5 Seconds
 Seismic Trigger: 0.508 mm/s
 Acoustic Trigger: 142.1 dB
 Voltage: 6.3

Peaks and Frequencies	Graph Information
PPV Maximum: 0.889 mm/s Acoustic: 115.6 dB @ 7.7 Hz (2.19 s) Radial: 0.826 mm/s @ 51.2 Hz (0.318 s) Vertical: 0.826 mm/s @ 51.2 Hz (0.163 s) Transverse: 0.889 mm/s @ 39.3 Hz (0.235 s) Last Calibration Date: 21/04/2015	Time Range: -0.500 s to 5.00 s Acoustic Scale: 0.0600 Mb/div Seismic Scale: 0.445 mm/s/div Time Intervals: 0.550 Seconds



Carrière de BRS
 Comblain/Fraiture -4
 Tir du 09/04/2018
 Sismographe placé au
 261 Halleux
 4710 Comblain-au-Pont

Record: 2164201804091553100.dtb
 Number: 100
 Seismograph: Mini-Seis
 Type of Record: Waveform
 Date: 9/04/2018 15:53:00
 SN: 2164
 Duration: 5.50 Seconds
 Sample Rate: 1024
 Pre-Trigger: 0.5 Seconds
 Seismic Trigger: 0.508 mm/s
 Acoustic Trigger: 142.1 dB
 Voltage: 6.3

Peaks and Frequencies	Graph Information
PPV Maximum: 0.889 mm/s Acoustic: 115.6 dB @ 7.7 Hz (2.19 s) Radial: 0.826 mm/s @ 51.2 Hz (0.318 s) Vertical: 0.826 mm/s @ 51.2 Hz (0.163 s) Transverse: 0.889 mm/s @ 39.3 Hz (0.235 s) Last Calibration Date: 21/04/2015	Time Range: -0.500 s to 5.00 s Acoustic Scale: 0.0600 Mb/div Seismic Scale: 0.445 mm/s/div Time Intervals: 0.550 Seconds

